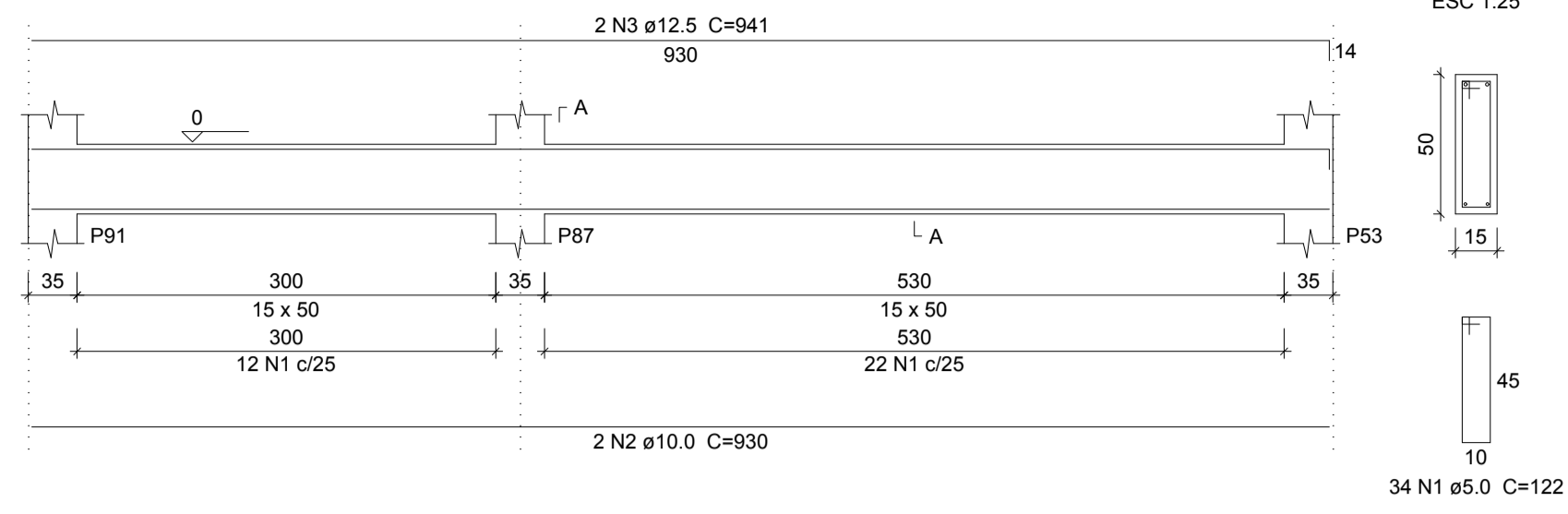
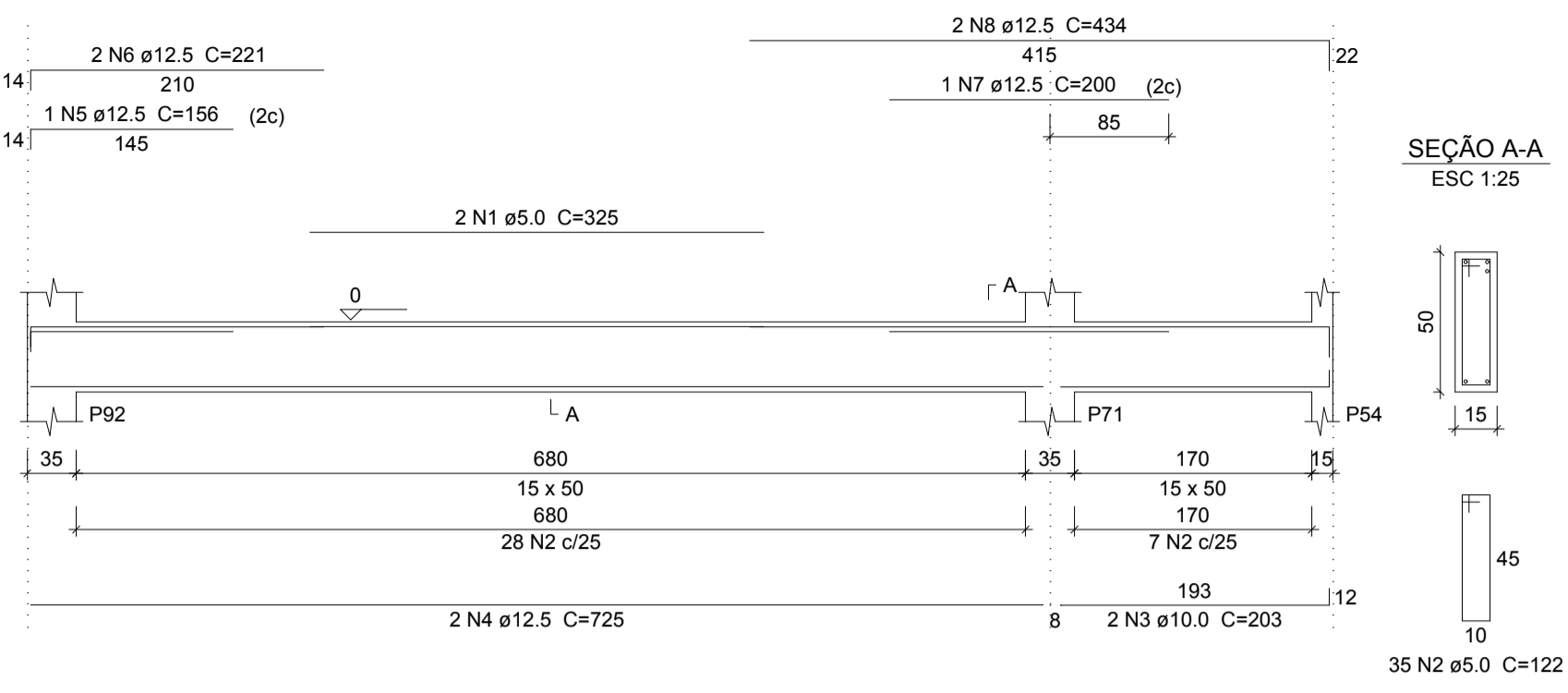


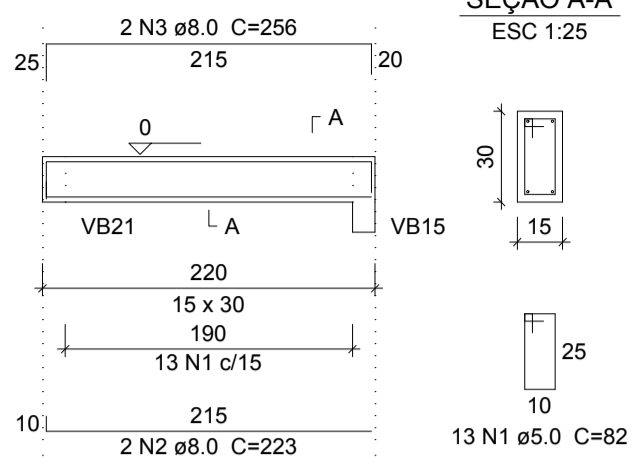
VB33
ESC 1:50



VB34
ESC 1:50



VB35
ESC 1:50



Relação do aço

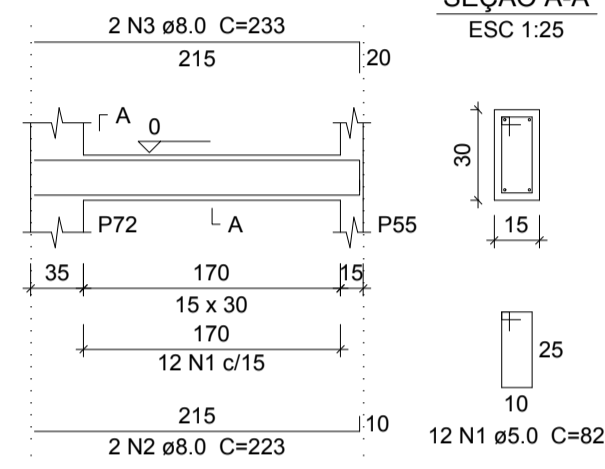
ELEMENTO	AÇO	N	DIAM	Q	UNIT (cm)	C.TOTAL (cm)
VB33	CA60	1	5.0	34	122	4148
	CA50	2	10.0	2	930	1860
	CA50	3	12.5	2	941	1882
VB34	CA60	1	5.0	2	325	650
	CA60	2	5.0	35	122	4270
	CA50	3	10.0	2	203	406
	CA50	4	12.5	2	725	1450
	CA50	5	12.5	1	156	156
	CA50	6	12.5	2	221	442
	CA50	7	12.5	1	200	200
	CA50	8	12.5	2	434	868
VB35	CA60	1	5.0	13	82	1066
	CA50	2	8.0	2	223	446
	CA50	3	8.0	2	256	512
VB36	CA60	1	5.0	12	82	984
	CA50	2	8.0	2	223	446
	CA50	3	8.0	2	233	466
VB37	CA60	1	5.0	31	82	2542
	CA50	2	10.0	1	240	240
	CA50	3	10.0	2	530	1060
	CA50	4	12.5	1	545	545
	CA50	5	12.5	2	552	1104
VB38	CA60	1	5.0	48	122	5856
	CA50	2	6.3	1	77	77
	CA50	3	10.0	2	927	1854
	CA50	4	10.0	2	338	676
	CA50	5	12.5	2	1130	2260
	CA50	6	12.5	2	218	436
VB39	CA60	1	5.0	13	82	1066
	CA50	2	8.0	2	210	420
	CA50	3	8.0	2	249	498
VB40	CA60	1	5.0	13	82	1066
	CA50	2	8.0	2	226	452
	CA50	3	8.0	2	252	504
VB41	CA60	1	5.0	33	82	2706
	CA50	2	8.0	2	546	1092
	CA50	3	10.0	2	566	1132
VB42	CA60	1	5.0	34	122	4148
	CA50	2	10.0	4	930	3720
VB43	CA60	1	5.0	47	122	5734
	CA50	2	10.0	2	790	1580
	CA50	3	10.0	2	465	930
	CA50	4	10.0	2	1150	2300
	CA50	5	10.0	2	195	390

Resumo do aço

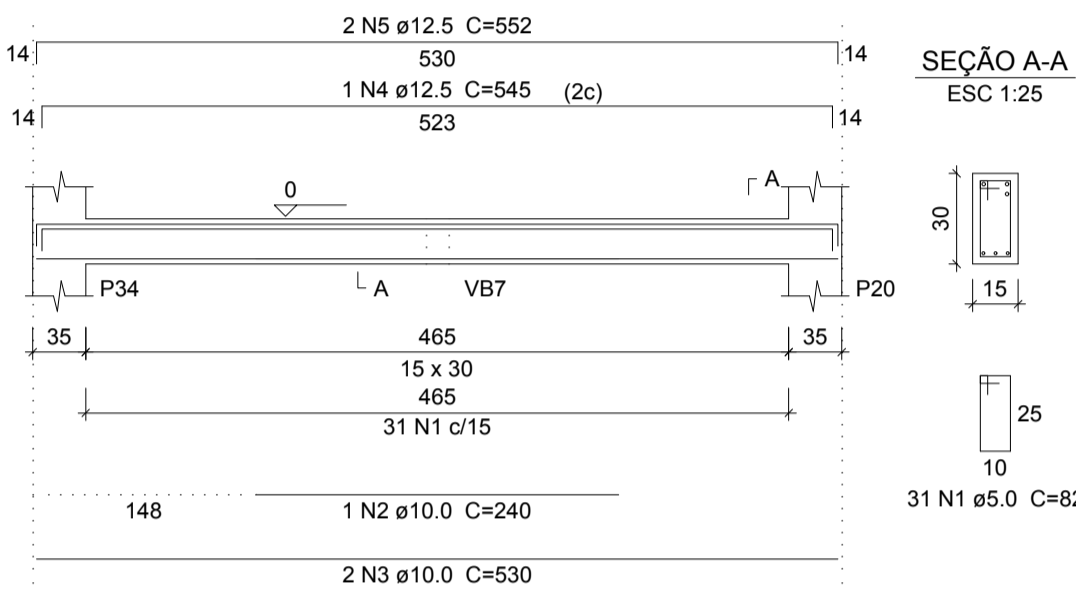
AÇO	DIAM	C.TOTAL (m)	PESO (kg)
CA50	6.3	0.8	0.2
	8.0	48.4	19.1
	10.0	161.5	99.6
	12.5	93.5	90
	5.0	342.4	52.8
PESO TOTAL			
CA50		208.8	
CA60		52.8	

Vol. de concreto total (C-25) = 4.87 m³
Área de forma total = 75.9 m²

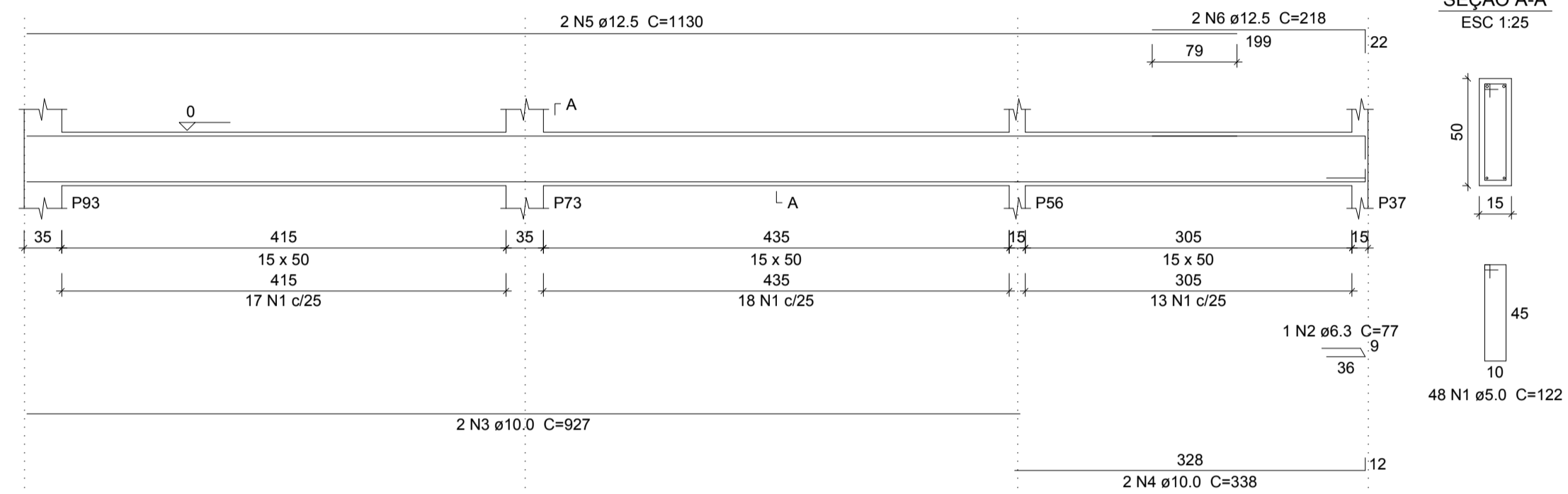
VB36
ESC 1:50



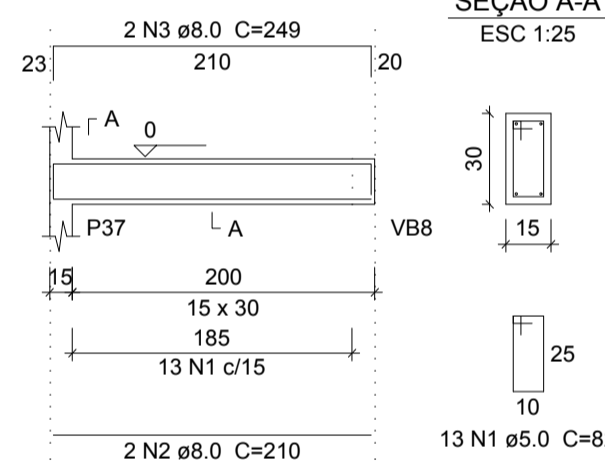
VB37
ESC 1:50



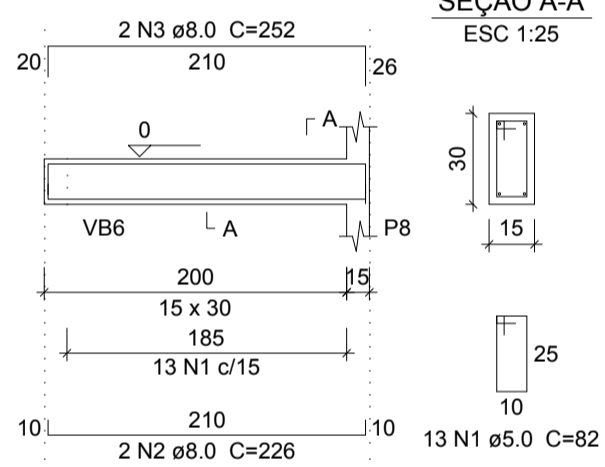
VB38
ESC 1:50



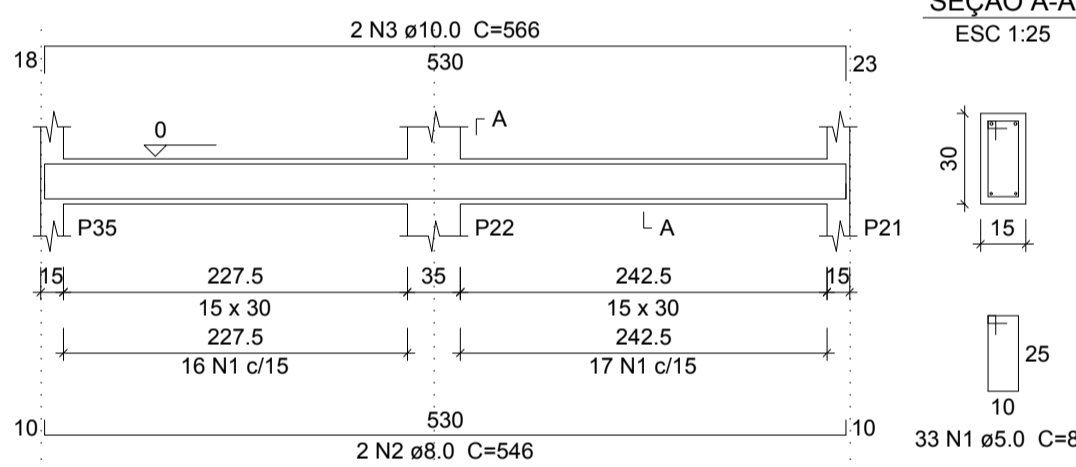
VB39
ESC 1:50



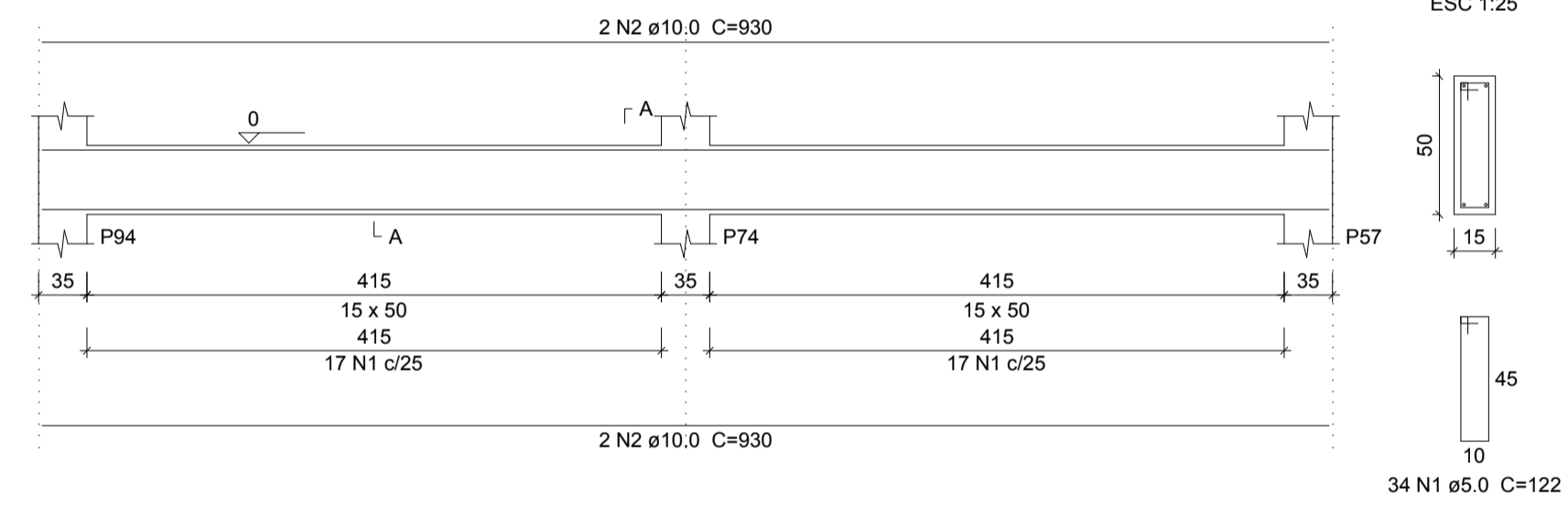
VB40
ESC 1:50



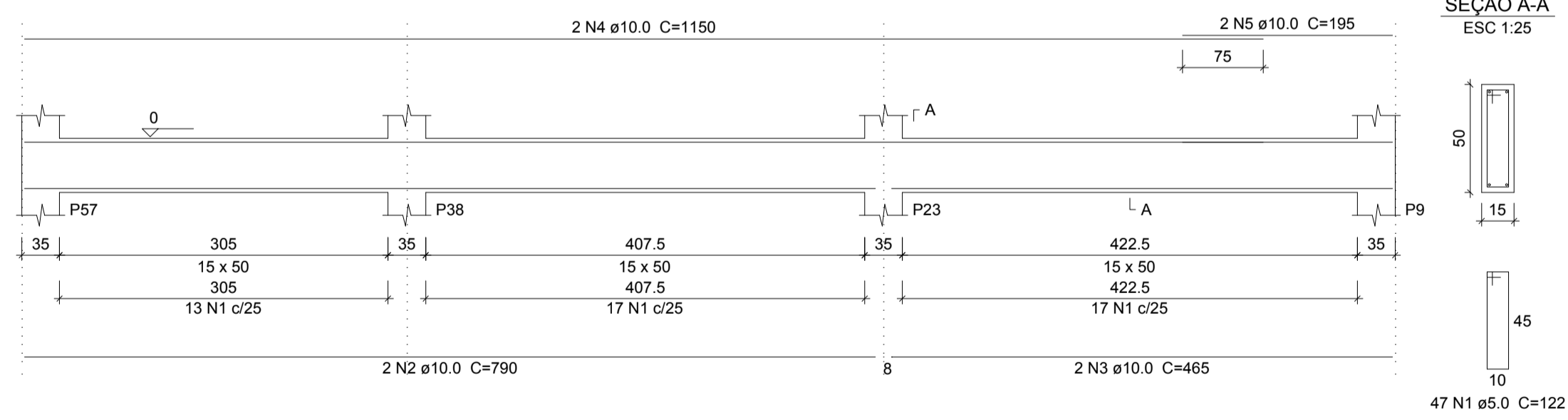
VB41
ESC 1:50



VB42
ESC 1:50



VB43
ESC 1:50



DETALHE ESTRIBO LIGAÇÃO VIGA E PILAR S/ESCALA

TIPO DA OBRA:	REESTRUTURAÇÃO DA ESCOLA ESTADUAL JOSÉ ALVES BEZERRA		
PROPRIETÁRIO CPF OU CGC:	PREFEITURA MUNICIPAL DE PORTO DOS GAÚCHOS		
LOCAL E INSCRIÇÃO CADASTRAL:	Endereço: Av. Guilherme Meyer Município de Porto dos Gaúchos - MATO GROSSO		
AUTOR DO PROJETO: CREA:	Evelin Luani Montagna MT 039125		
RESPONSÁVEL TÉCNICO: CREA:	Evelin Luani Montagna MT 039125		
ESCALA: INDICADA	DATA: OUT/2019	ASSUNTO: PROJETO ESTRUTURAL: PLANTA ARMAÇÃO DAS VIGAS VB33, VB34, VB35, VB36, VB37, VB38, VB39, VB40, VB41, VB42, VB43	FOLHA Nº 31/45
E S T A T I S T I C A			
ÁREAS:	% DE OCUPAÇÃO	COEF. APROVEIT.	Nº DE PISOS
VER PROJETO ARQUITETÔNICO	TÉRREO	DEMAIS PAV.	01